

Compass Learning Odyssey is web-based curriculum based on either the students' MAP results or teacher directed activities. Students can access Compass Learning Odyssey through any computer that has internet access; therefore they can access it from home as well as school.

To access compass from home:  
go to the Grove Avenue home page:

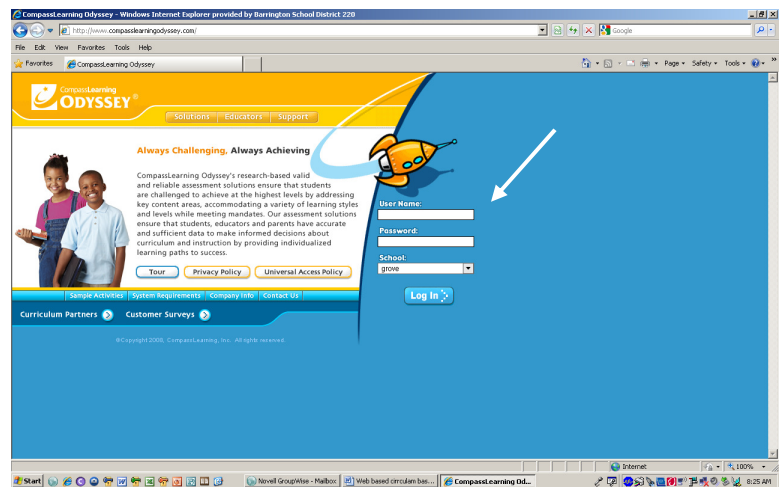
<http://www.barrington220.org/grove/>

From our home page under Student Resources located on the top right-hand side of the page, you will find a link to Compass Learning. Click on it and it will take you to Compass Learning Odyssey's home page.

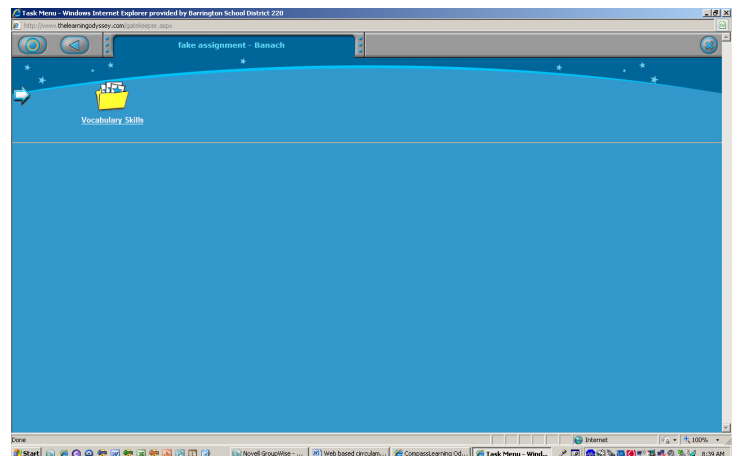


<http://www.compasslearningodyssey.com/>

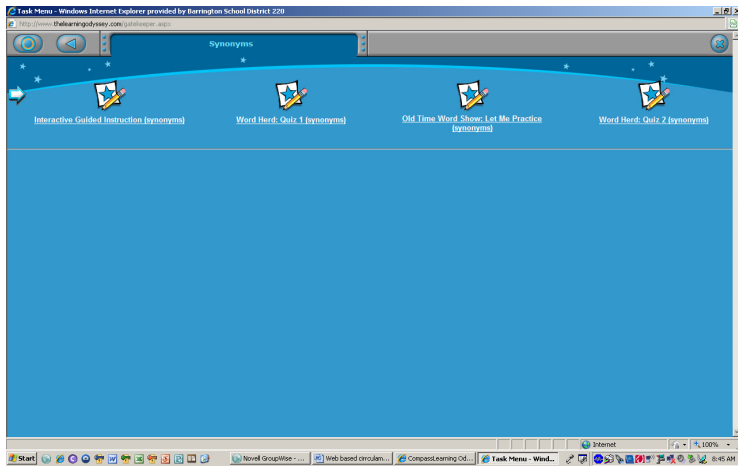
From here you will need to enter your user name, password, and school. Students have been given a sticker with their information. User Name and Password will be the same. It is your child's six-digit school identification number. Under "School" you will need to type in "Grove". This field is not case-sensitive, so you may enter it as: Grove, grove, GROVE.



Once you enter the "Launch Pad", you are able to choose the lessons in various subject areas. If NWEA (from MAP results) or your teacher has assigned lessons, "Assignments" will be indicated under the subject area. From there you will click on the subject and then choose the lesson folder you will work on. Once a lesson/activity is complete there will be a green check mark on that particular lesson/activity.

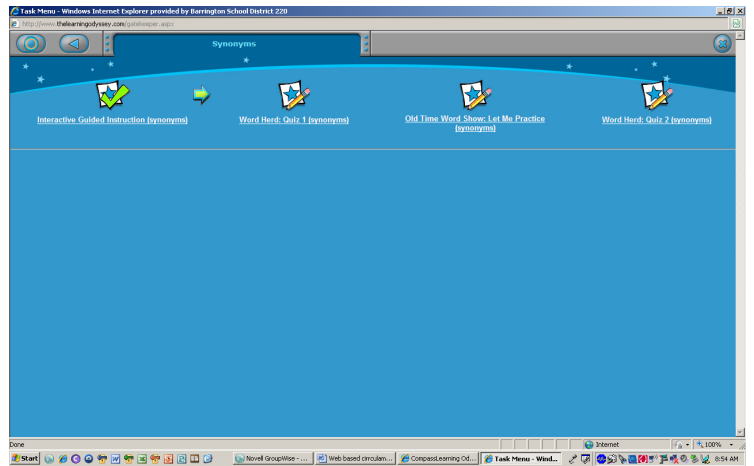


## Example of Student Launch Pad with assignments

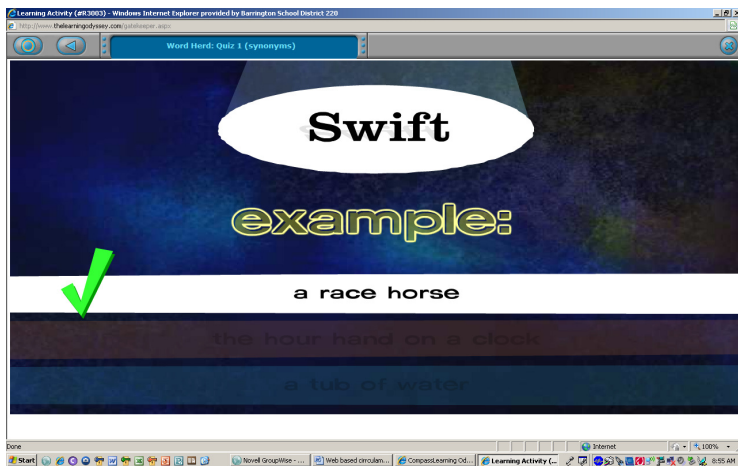


Example of activities

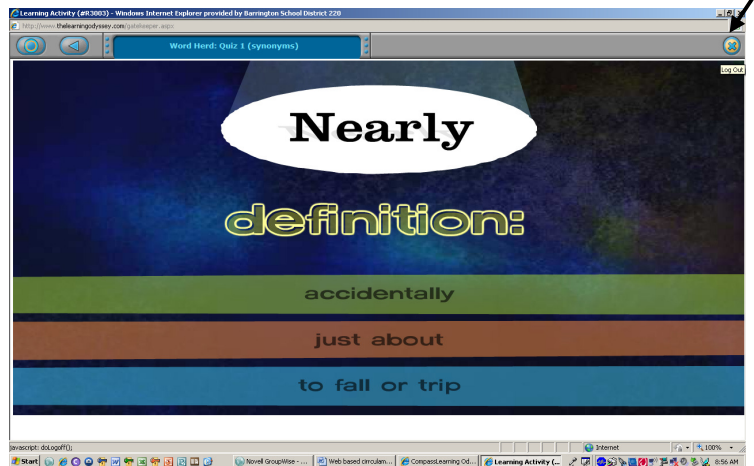
## Example of assignment folder



Example of completed assignments



Activity example



When closing out, please click on the blue "X" in the upper right-hand corner.

Please make sure that when you are leaving an activity that you close by clicking on the blue "X" in the upper right hand corner of Compass. That will ensure that if an activity is able to be resumed, you will be able to do so. Not all activities may be resumed.